

Compact Fans

Narrow, high performance centrifugal fans



KEY FEATURES

- Ecodesign ErP 2015 compliant - depending on fan size
- 'Compact' Direct drive fans
- External rotor motor
- Engineered for significant benefits in performance and pressure development
- Designed for handling air within 'space critical' equipment
- Temperature up to 65°C

ACF compact Fans

Airflow Development's compact direct drive fan can achieve 83 l/sec. This fan is specifically suited where space is at a premium. The fan incorporates an external rotor motor with integral tab lock constructed forward curved impeller. Impellers are dynamically balanced to grade 6.3 DIN ISO 1940. Fan casings are manufactured

from mild steel which is coated with a robust paint finish. Casings incorporate an output flange with integral fixing holes for ease of installation. OEM variant are available on request. Please apply to customer services for non-standard design (Minimum order quantities will apply).



APPLICATIONS

- Compact cooling in electronics / server cabinets
- Lighting and cinema equipment
- Smaller air conveying systems
- Fume cupboards

* Note - Fans not suitable for EEXE, EEXD, ATEX or corrosive atmospheres

- Museum interactive displays
- Plastic manufacturing
- Any application demanding 'space critical' air movement
- Car washers

SPECIFICATIONS

This fan is eminently suitable for speed control via voltage variation due to the use of an external rotor motor. For ease of electrical connection the unit is supplied with flying leads. Very low maintenance is achieved by the use of

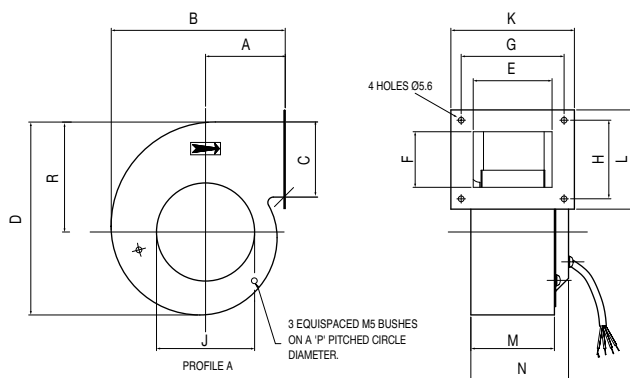
sealed for life bearings, typically offering a bearing life L10-25,000 hours in ideal conditions. Fans are suitable for any plane mounting. Test data in accordance with BS 848 Part 1/ISO 5801-2007

TECHNICAL DATA

Fan Model	Supply voltage	Frequency	Capacitor value	Max running current	Start current (approx)	Max input watts	Max air flow	Min static pressure	Noise level	Speed at max air flow	Weight	Max ambient temp
	Volts	Hz	µF	Amperes	Amperes	Watts	Litres/s	Pascal	dBA*	Rev/m	kg	°C
ACF120X62 L2	230	50	2	0.38	0.6	90	83	0	58	2020	1.95	65•

*at 1 metre •Thermal Protection

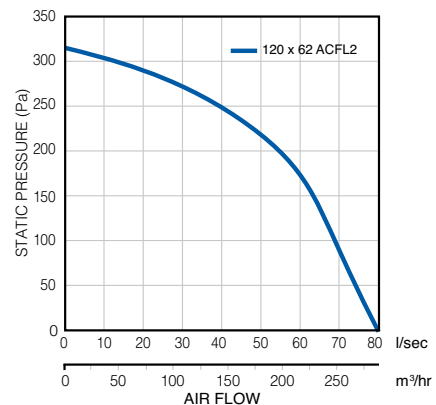
DIMENSIONS



Fan Model	Stock No.	A	B	C	D	E	F	G	H	I	K	L	M	N	P	R
120x62 L2	72371701	77	170	74	189	77	70	100	92	95	120	112	83	97	134	106

Dimensions are for guidance only - certified drawings available

PERFORMANCE



CONTROLS AND ACCESSORIES



See accessories page for the range of Commercial Speed Controllers

Call: 01494 560800

Visit: airflow.com



Airflow Developments Limited
Aidelle House, Lancaster Road,
Cressex Business Park,
High Wycombe, Buckinghamshire,
United Kingdom, HP12 3QP

E-mail: info@airflow.com
Telephone: +44 (0) 1494 525252

airflow.com

© Airflow Developments Limited. Airflow Developments Limited reserve the right, in the interests of continuous development, to alter specifications without prior notice. All orders are accepted subject to our conditions of sale which are available on request



80000690 Issue 1 06/07